

PHENOTYPIC AND GENOTYPIC CHARACTERIZATION OF *LISTERIA MONOCYTOGENES* ISOLATED FROM RAW MILK IN ASSIUT CITY

AMAL ISHAK GERGIS¹; MARY REFAT HAFEZ¹; ZEINAB AHMED MOHAMMED²; SAHAR GAMAL ABD EL AZIZ¹ AND AZHAR MOHAMMED HASSAN¹

¹ Animal Health Research Institute, Assiut Branch

² Animal Health Research Institute, Luxor Branch

Received: 13 January 2024; **Accepted:** 21 March 2024

ABSTRACT

Among a food-associated pathogen, *Listeria monocytogenes* has become the most important one. It can cause a "high fatality rates 20–30%" in comparison to another foodborne bacteria which causing dangerous disease called listeriosis. *Listeria* outbreaks are often linked to dairy products and milk. This article intends to review phenotypic and genotypic characters of *L. monocytogenes* in Assiut city. How common *L. monocytogenes* is determined in different sources of raw milk (20 market milk, 40 buffalo milk and 40 cow milk). By detection of 3 virulence genes and its sequencing (*hlyA*, *inlB* and (*prfA*) can determined the pathogenic potential of the isolates. Firstly enrichment samples in fraser broth, then, plating on to ALOA®, Merck. Finally a multiplex-PCR, was used for identification of suspected colonies. The results revealed that 8 (40%), 6 (15%) and 11 (27%) of samples that collected from market, buffalo and cow raw milk were positive respectively. Antibacterial sensitive test showing in vitro that *Listeria monocytogenes* had a higher sensitivity to Sulfa methoxazoletrimethoprim (SXT) and Ciprofloxacin, (CIP) followed by Chloramphenicol (C), low sensitive to Gentamicin (CN), it resisted Erythromycin (E) and Amoxicillin (AX). The PCR results for isolates have *hlyA*, *InlB* and *prfA* genes of *L. monocytogenes*.

Keywords: raw milk PCR, *L. monocytogenes hlyA*, *InlB* and *prfA* genes

INTRODUCTION

Renato *et al.* (2015) showed that *L. monocytogenes* was causing listeriosis disease that affects human being and ruminant. (Ikeh, *et al.*, 2010; Khan *et al.*, 2013) recorded that spreading of *L. monocytogenes* infestation as a result of

various types of microorganisms causing food poisoning, that exist in milk and milk products.

Todar, (2009) postulated that eating of any food contaminated with *L. monocytogenes* a serious disease infected humans and animals (Listeriosis) were occurred, in nine ninety% of cases and rarely from the environment. The infective dose of *L. monocytogenes* is not precisely determined. Ooi and Lorber, (2005) showed the value of hundred/thousand *L. monocytogenes* per gram of foodstuff cause listeriosis in humans according to most of researchers. EFSA

Corresponding author: Azhar Mohammed Hassan
E-mail address: azharhassan769@gmail.com
Present address: Animal Health Research Institute, Assiut Branch

ECDC, (2015) indicated that immunocompromised individuals, pregnant women, neonates, and the old aged person which acted as the higher risk group for infection with *Listeria monocytogenes*. Gray *et al.* (2004) studied that infection with *Listeria monocytogenes* is equally in both animals and human. The risk of infection with *Listeria* related with food is high due to many reasons as its wide variety of reservoirs (Lianoe and Sofos 2007) it was able to colonize abiotic surface), (Poimenidou *et al.*, 2016b) and to withstand environmental stresses (Poimenidou *et al.*, 2016a) microorganism can be found in food plants for several months or years. O'Connor *et al.* (2010) noticed that there are various ways for contamination of food with *Listeria* and transmitted to man. The most common clinical symptoms as a result of infection with *Listeria* were meningitis, septicemia, and the most infected person were children, immune compromised patients and pregnant (Şanlıbaba and Tezel, 2018). Whereas, in economically important animals, the disease by *Listeria* causing abortion and central nervous system diseases in cattle and sheep, in livestock industry and can lead to decreasing of milk yield and high mortality rate in breeding farms. Skin and intestinal tract of livestock animals acted as habitats for many foodborne microorganism and opportunistic bacteria which contaminated milk during milking.

Theivagt *et al.* (2006); Vera *et al.* (2013) and U.S. Centers for Diseases Control and Prevention *Listeria* 2022) showed that phenotypically *Listeria monocytogenes* is a negative Gram stain rod-shaped, has no capsule has no spore 0.5 mm in width and 1-1.5 mm in lengthened forming single short chain. Moreover Robinson *et al.* (2000) revealed that taxonomically, *Listeria monocytogenes* is classified into 6 species. *L. monocytogenes*, *L. ivanovii*, *L. seeligeri*, *L. innocua*, *L. welshimeri* from those only *L. monocytogenes* and *L. ivanovii* and *L. graii* are pathogenic Although it was be

infect both human and animals, *L. ivanovii* is a principally an animal pathogen that rarely occurs in man .

Genotypic characterization of *L. monocytogenes* depend on detection of virulence genes of bacteria or the products of gene. *Listeriolysin O (LLO)* as a marker is required for intracellular survival of invading bacteria in mammalian host. *Hly-A*. *L. monocytogenes* is the gene encoding LLO can be produce other virulence proteins in side of LLO as PI-PLC and PC- Ward *et al.* (2010).

(Halberg- Larasen *et al.*, 2014) detected that spreading of *L. monocytogenes* infection be related to drinking of milk and causing high mortality rate 30% and economic problems in the dairy industry.

Reissbrodt, (2004) documented that in conventional methods the detection of *L. monocytogenes* from foods samples requires the use of enrichment cultures then followed by selective plating. Reissbrodt, (2004) and Gasanov *et al.* (2005) recorded that a significant growth must be occurred not only in selective culture and enrichment procedures, but also using of various new and rapid detection methods depend on antibody and antigens reaction. PCR has been used for rapid, sensitive and specific diagnosis of foodborne micro-organisms (Olsen *et al.*, 1995).

MATERIALS AND METHODS

1- Products tested:

One hundred raw milk samples collected randomly from different locations in Assiut City including (market, buffalo and cow milk 20, 40 and 40 samples, respectively). The samples were transported into sterile plastic bags and transported in an ice box to the laboratory .

2- Microbiological analysis for *Listeria* isolation:

As described by Becker *et al.* (2006) for isolation and identification of *L. monocytogenes* in this study, ISO 11290 method was used.

2-1-Preenrichment: (Fraser and Sperber, (1988)

The first enrichment culture, 25 g of samples to 225 ml of half Fraser broth (Merck) in stomacher bag and were homogenized by a stomacher (Lab blender 400, Seward Medical, London, UK) and incubated for 24 h at 30 °C .

2-2-Selective enrichment:

The second enrichment culture 0.1 ml of half Fraser broth to 10 ml of Fraser broth were added and incubated at 37 °C for 48 h in aerobic conditions.

2-3-Isolation and identification:

2-3-1 Isolation

A loopful of enriched Fraser broth-culture was streaked on the agar plate ALOA®, Merck agar (Merck) and OXFORD agar for selective plating (the tubes that present a blackening) was performed. The Fraser broth-cultures were incubated for 24 h at 37 °C. On tryptic soy agar with 0.6% yeast extract (Oxoid, Basingstoke, UK) three to five colonies were re-streaked.

2-3-2- Identification

According to FDA bacteriological Analytical Manual (Hitchins, 1995). Colonies were confirmed by catalase, oxidase, methyl-red, voges proskauer and urease biochemical tests. Also, sugar fermentation as (rhamnose, xylose and mannitol) were confirmed. On CAMP test and blood agar, the isolates were further performed by hemolysis according, to the manufacturer's recommendations selected colonies, initially identified as *Listeria* spp. and transportd to 5% sheep blood with Columbia Agar (bioMérieux). Finally, by using the PCR, we can determine the hemolysis type and identification was performed.

2.!.Antimicrobial sensitivity tests in – Vitro:

Against different antibiotics, *L. monocytogenes* strains were subjected and the antibiotic discs are Erythromycin (E), Ceftriaxone (CRO), Gentamycin (CN), Clindamycin (DA), Amoxicillin (AX), Ciprofloxacin (CIP), Chloramphenicol (C) Sulfamethoxazole-trimthoprim (SXT) Ciprofloxacin) CIP) by using the disc diffusion method (NCCIS, 1999) multiplex-PCR assay. 2.5. Genotypic detection of isolated *L.monocytogenes* and and some virulence in them by using of Polymerase chain reaction (PCR)

Three sets of primers were used for detection of virulence genes in *Listeria monocytogenes* strains (16 rRNA; internalin heamolysin (*hlyA*); internalin B (*inlB*) and positive regulatory factor A (*prfA*).

DNA Extraction (Vera *et al.*, 2013)

By using the QIAamp DNA Mini kit (Qiagen, Germany, GmbH). DNA was extracting. 200 µl of the sample suspension with 20 µl of proteinase K and 200 µl of lysis buffer was incubated at 56OC for 10 min. To the lysate after incubation, 200 µl of 100% ethanol was added then washing the sample and centrifuged following the manufacturer's recommendations. 100 µl of elution buffer provided in the kit was eluted with Nucleic acid.

For DNA amplification reaction of *L.monocytogenes* we can be using QIA kit was amp used kit (Wehlan and &Kreft 2001).).

PCR amplification

The reaction was performed in an Applied biosystem 2720 thermal cycler, in a 25- µl reaction containing 12.5 µl of EmeraldAmp Max PCR Master Mix (Takara, Japan) primers were utilized. 5.5 µl of water, 1 µl of each primer of 20 pmol concentration and 5 µl of DNA template .

3.-Analysis of the PCR Products.

1. By electrophoresis the products of PCR were separated. On 1.5% agarose gel (Applichem, Germany, GmbH) in 1x TBE buffer at room temperature using gradients of 5V/cm.

2. A Gelpilot 100 bp plus Ladder (Qiagen, Germany, GmbH) was used to determine the

fragment sizes. For gel analysis twenty µl of the products was loaded in each gel slot .

3. By a gel documentation system (Alpha Innotech, Biometra). The gel was photographed. Through computer software the data was analyzed .

Oligonucleotide Primer. From Metabion (Germany) are listed in table (2,3) primers were supplied.

Table A: amplicon sizes

| Ampliconation (35 cycles) | | Amplified segment (b p) | Primary denaturation | Reference |
|---------------------------|--------------|-------------------------|----------------------|-------------------------------|
| Secondary denaturation | Annealing | | | |
| 94C 30sec. | 60C 1 min | 1200 | 94°C 5 min | Kumar <i>et al.</i> , 2015 |

Table B: Target genes, Primers sequences and Final extension

| Target agent | Target genes | Final extension | Primers sequences |
|-------------------------|--------------|-----------------|--|
| Listeria mmonocytogenes | 16 S rRNA | 72°C 12 mmin | GgACCggggCTA ATA CCg AA TgATAA TTC ATg TAggCg AgT TgCAGCCTA |

Table C: During cPCR cycling conditions of different primers4-

| Genes | Primary denaturation | Secodary denaturation | Annealing | Extension | No. of cycles | Final extension | |
|-------|----------------------|-----------------------|----------------|---------------|---------------|-----------------|-----------------|
| prfA | 94°C 5 min. | 94°C 30 sec. | 50°C 50 sec | 72°C 1 min | 35 | 10 min. | |
| inlB | | | 55C 40 sec. | | | | 72C |
| hlyA | | | 50C 30 sec. | | | | 72°C 30 sec. |

Table D: Sequences sources oligonucleotide and primmers.

| Primer | Sequence | Amplified product | Reference |
|--------|---|-------------------|--------------------------|
| hlyA | GCA-TCT-GCA-TTC-AAT-AAA-GA TGT-CAC-TGC-ATC-TCC-GTG-GT CCYTTTTATGTACCCAYGA | 174bp | Hitchins, 1995 |
| inlB | CTGGAAAGTTTGTATTTGGGAAA TTTCATAATCGCCATCATCACT | 343 bp | |
| prfA | TCT-CCG-AGC-AAC-CTC-AAC-CTC-GGA- ASS TGG-ATT-GAC-AAA-ATG- GAA-CA | 1052 bp | Sambrook, et al.,1989 |

Statistical analysis

By using Chi-square analysis. All statistical analysis the relationship between the

true/false positive results and the food categories were analyzed using Chi-square analysis.

RESULTS

Table 1: Prevalence of *L. monocytogenes* in the Market, Buffalo and Cow milk according to conventional method.

| Types of Samples | No of examined samples | The positive isolates | isolates percentage %. |
|------------------|------------------------|-----------------------|------------------------|
| Market milk | 20 | 8 | 40 |
| Buffalo milk | 40 | 6 | 15 |
| Cow milk | 40 | 11 | 27.5 |
| Total | 100 | 25 | 82.5 |

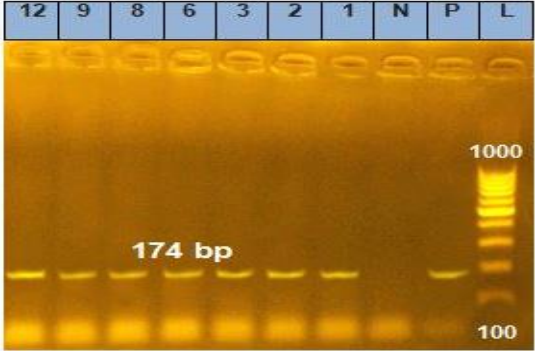
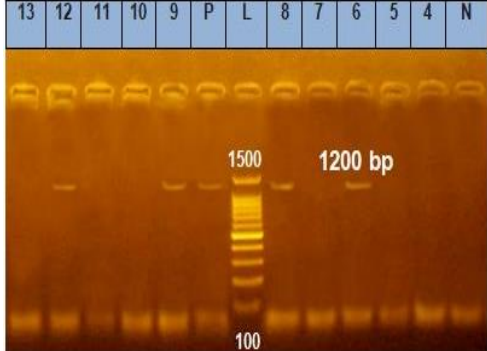
Table 2: In-vitro antimicrobial sensitivity test for isolated *L. monocytogenes*.

| | sxt | CN | E | CRO- | NV | D | AX | CIP | C |
|---------------------|------|------|------|------|------|------|------|------|------|
| Market milk | | | | | | | | | |
| % S | 83.3 | 16.7 | Zero | 33.3 | Zero | 33.3 | Zero | 83.3 | Zero |
| % R | 16.7 | 66.7 | 100 | 50 | 83.3 | 66.7 | 100 | Zero | 33.3 |
| % I | Zero | 16.7 | Zero | 16.7 | 16.7 | Zero | Zero | 16.7 | 66.7 |
| Buffulo milk | | | | | | | | | |
| % S | 100 | 33.3 | Zero | 33.3 | Zero | 66.7 | Zero | 66.7 | 33.3 |
| % R | Zero | Zero | 100 | Zero | 100 | Zero | 100 | Zero | 33.3 |
| % I | Zero | 66.7 | Zero | 66.7 | Zero | 33.3 | Zero | 33.3 | 33.3 |
| Cow milk | | | | | | | | | |
| % S | 70 | 30 | 10 | 50 | zero | 20 | zero | 90 | 80 |
| % R | 20 | 40 | 90 | 10 | 90 | 40 | 100 | Zero | 10 |
| % I | 10 | 30 | zero | 40 | 10 | 40 | zero | 10 | 10 |

% S sensitive

% R Resistance

% I Intermediated

| | |
|--|--|
|  |  |
| <p>Photo 1: hylA gene. Lane L: 100-1000 bp Ladder Neg: Negative control Pos: Positive control at 174bp Lanes 1 to 12: <i>L.monocytogenes (hyl A)</i> positive</p> | <p>Photo 2: inlB genes. Lane L: 100-1500 bp Ladder. Neg: Negative control Pos: Positive control at 1200bp Lane 1 to 12 :<i>L.monocytogenes in I B</i></p> |

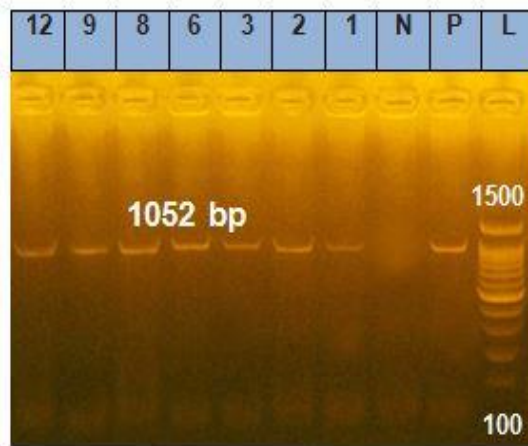


Photo 3: *prfA* genes
Lane L: 100: 1500 bp Ladder.
Neg: Negative control
Pos: Positive control at 1052 bp
Lane 1 to 12: *L. monocytogenes prf A*

DISCUSSION

Adzitey *et al.* (2013): Liao *et al.* (2021) demonstrated that among over 200 foodborne diseases which transmitted by food acted as a growing health problem in all world. As a result of high mortality rates saucing by listeria infection and its ability to grow in refrigerator temperature. *L. monocytogenes* has special significance among foodborne pathogens (Lida *et al.*, 2014 and Anonymous, 2021).

In medical and veterinary medicine, *L. monocytogenes* is an important bacteria and

can cause abortion, encephalitis in sheep and cattle and in other mammals, birds and fish cusing a variety of diseases (Kalrey *et al.*, 2008)..

Eating of fast food was the most human listeriosis cases (Kells and Gilmour, 2004) indicated that using of fermented dairy products in feeding that made of raw milk that contaimeinated with *L. monocytogenes* either from environmental sources or postprocessing not directly related to raw milk or use of raw milk contaimeinated with *L. monocytogenes*.

Control of this bacterium during food processing is extremely difficult because of listeria is more spreading in food industrial environment and farm (Kells and Gilmour, 2004 and Sarfraz *et al.*, 2017). The ability of *L. monocytogenes* for causing lesions depended on the expression of virulence factors and immune status of patients those the most exposed to infection of *L. monocytogenes* Patients have weakened cell-mediated (Lecuit *et al.*, 2004).

In Table 1 the result showed that *L. monocytogenes* was isolated in 8,6 and 11 in market, buffalo and cow raw milk respectively. These percentages were (0.4, 150 and 0.275%) in market, buffalo and cow raw milk, respectively, which not agreed with that represented by (Zeinali *et al.*, 2017)

In Table 2, *L. monocytogenes* were sensitive to Sulfamethoxazole-trimethoprim (SXT) and Ciprofloxacin (CIP) followed by Chloramphenicol (C), less sensitivity to Gentamicin (CN). Whereas resistant to Erythromycin (E) and Amoxicillin (AX) as in-vitro antimicrobial sensitivity test. These results agreed with (Yao 2022). and did not agree with (Altuntas *et al.*, 2012).

The result of virulence tests for isolated listeria recorded that all *L. monocytogenes* showed narrow zone of, β -hemolysis in blood agar, and positive to CAMMP test that results were similar to that obtained by (Marrouf *et al.*, 2007 and Rahimi *et al.*, 2020). Which can determine the pathogenicity (Marrouf *et al.*, 2007).

Wile, did not agree with that reported by (Yao 2022). *L. monocytogenes* PCR results were not detected in all isolated recorded that (16rRNA; *hlyA*, *inl B* and *prfA* genes). with agreed with those recorded by (Ciolacu *et al.*, 2015) showing that existing of 16rRNA genes in *L. monocytogenes* isolates, results recorded that, amplification was in all tested isolates.. while do not agreed with (Shen *et al.*, 2000). PCR results

for: *inl B* gene in *L. monocytogenes* recorded that, *inlB* gene do not amplified in all tested isolates.

Similar data were recorded by (Gelbicova and Karpiskova, 2012; Khen *et al.*, 2014; Ciolacu *et al.*, 2015 and Self *et al.*, 2019) result of PCR for *hlyA* gene in *L. monocytogenes* reported that *hlyA* was amplified in all tested isolates making products of 174bp .

It was not similar to (Gelbicova and Karpiskova, 2012 and Ciolacu *et al.*, 2015), the result of PCR of positive regulatory factor gene (*prfA*) in *L. monocytogenes* showed that, *prfA* gene wasn't amplified in all tested isolates .

In the present study, Table 1 by using conventional method postulated that *L. monocytogenes* was detected in raw milk samples 7.5%, almost similar results by Aygun and Pehlivanlar (2006) recorded *L. monocytogenes* in 5% of milk samples , whereas, (Borucki, *et al.*, 2005) recorded that in 30 samples of sheep, goats and cow milk samples, whereas, Kasalica and Oljačić (2007) recorded that in 30 samples of sheep, goat and cow milk the presence of *L. monocytogenes* was not established and (Mohamed, 2010) reported that *L. monocytogenes* was present in 1.7 and 3.3% in raw milk samples in farm a and b. also, Cabanes *et al.*, 2005) showed that listeria *monocytogenes* was present in 4% of raw milk samples, dairy products associated with *L. monocytogenes* infection. Cow milk is acted as carrier of the fatal listeriosis. (Farber and Peterkin, (1991) and Sepahvand *et al.* (2022) .

Clinical healthy animals are represented as a carriers of *L. monocytogenes* and acted as a source of contamination of milk. The most common route of transmission of *L. monocytogenes*, is mainly milk due to unhealthy animals on the farm. listeria *monocytogenes* was isolated in 60% samples as result of poor quality of

prepared silage according to some literature data, (Vilar *et al.*, 2007). *L.monocytogenes* was isolated in 1% samples of milk collected from cows fed silage (Vilar *et al.*, 2007). Poor quality of prepared silage is the main source infection of animals by *L. monocytogenes*.

L. monocytogenes in food from reports speak of the presence of microorganism in food obtained in developed countries (Melanie and Siegfried, 2001; Karakolev, 2009) recorded that in Europe milk can be contaminated with *L. monocytogenes* with 2,5- 6 % of samples that indicating potential risk for human population from dairy products manufactured from milk according to microbiological studies (Donnelly, 2004).

L. monocytogenes acted as an exciting models of host–pathogen interaction at the cellular and molecular levels, as a result of various molecular virulence determinants have been a role in the cellular infection by *L. monocytogenes*. These virulence determinants include, among others, the internalins, listeriolysin O (LLO), ActA protein, two phospholipases, a metalloprotease, Vip protein, a bile exclusion system (BilE) and a bile salt hydrolase (Cabanés *et al.*, 2005; Cossart and Toledo-Arana, 2008; Sleator *et al.*, 2005). Targeting the hly gene, has been found to be a sensitive and rapid technique for confirmation of the identification of suspected *L. monocytogenes* isolated on selective/differential agar plates according to Polymerase Chain Reaction, results (Gouws and Liedemann, 2005)..

CONCLUSION

Finally, it can conclude that *L. monocytogenes* is the bacterium which can pollute raw milk causing disease called listeriosis. *L. monocytogenes* isolates were sensitive to Sulfamethoxazole-trimethoprim (SXT) and Ciprofloxacin (CIP) followed by Chloramphenicol (C), less sensitive to

Gentamicin (CN). Whereas, resistant to Erythromycin (E) and Amoxicillin (AX).

L. monocytogenes isolates were Positive for CAMP also it made β -zone of hemolysis. PCR result recorded that isolates are *L. monocytogenes* and have *hlyA*, *inlB* and *prfA* virulence genes.

REFERENCES

- Adzitey, F.; Huda, N. and Ahmat, A. (2013): Molecular techniques for detecting and typing of bacteria, advantages and application to foodborne pathogens isolated from ducks. *Biotech.* pp. 97-107
- Altuntas EG, Kocan D, Zeinali, T., Jamshidi, A., Bassami, M. and 4Rad, M. (2017): Isolation and identification of *Listeria* spp. in chicken carcasses marketed in northeast of Iran. *International Food Research Journal* 24(2): 881-887
- Anonymous, "Centers of disease control and prevention," 2021,
- Aygun, O. and Pehlivanlar, S. (2006): *Listeria* spp. in the raw milk and dairy products in Antakya, Turkey. *Food Control.* 17: 676-679
- Becker, B.; Schuler, S.; Lohneis, M.; Sabrowski, A.; Curtis, G.D.W. and Holzappel, W.H. (2006): Comparison of two chromogenic media for the detection of *Listeria monocytogenes* with the plating media recommended by EN/DIN 11290-1. *Inter. J. Food Microbiol.* 109, 127-131.
- Borucki, M. K., C. C. Gay, J. Reynolds, L. Katherine, McElwain, S.H. Kim, D. R. Call and D. P. Knowles. (2005): Genetic diversity of *Listeria monocytogenes* strains from a high-prevalence dairy farm. *Appl Environ Microbiol.* 71: 5893-5899.
- Cabanés, D.; Sousa, S.; Cebria, A.; Lecuit, M.; Garcia-del; Portillo, F. and Cossart, P. (2005): Gp96 is a receptor for a novel *Listeria monocytogenes* virulence factor, Vip, a surface

- protein. *The EMBO Journal*, 24 (15), 2827–2838.
- Ciolacu, L., Nicolau, A.I., Wagner, M., Rychli, K. (2015):* *Listeria monocytogenes* isolated from food samples from a Romanian Black market show distinct virulence profiles. *Int. J. Food Microbiol.* 209:44-51
- Cosansu E, Ayhan K, Juneja VK, Materon (2012):* *L.monocytogenes* Antibiotic and bacteriocin sensitivity of *Listeria monocytogenes* strains isolated from different foods. *JFNS.* 3(3):363-8.
- Cossart, P. and Toledo-arana, A. (2008):* *Listeria monocytogenes*, a unique model in infection biology: an overview. *Microbes infection*, 10, 1041–1050.
- Curtis, G.D.; Mictchell, R.G.; King, A.F. and Griffin, E.J. (1989):* A selective differential medium for the isolation of *Listeria monocytogenes*. *Lett. Appl. Microbiol.* 8:95–98.
- Donnelly, C.W.; Fox, P.F.; McSweeney, P.L.; Cogan, T.M. and Guinee, T.P. (Eds.) (2004):* Growth and survival of microbial pathogens in cheese. In *Cheese: Chemistry, Physics and Microbiology, Volume 1, General Aspects* (3rd Ed.), Elsevier Academic Press, 541-559.
- EFSA ECDC (2015):* EFSA (European Food Safety Authority) and ECDC (European Centre for Disease Prevention and Control), (2015). The European Union summary report on trends and sources of zoonoses, zoonotic agents and food-borne outbreaks in 2014. *EFSA J.* 13,4329-4346.
- Farber, J.M. and Peterkin, P.I. (1991):* *Listeria monocytogenes*, a food-borne pathogen. *Microbiol. Rev.*, 55, 476-511.
- Fraser, J.A. and Sperber, W.H. (1988):* ISO NORMATIVE 11290-1 Horizontal method for the detection and enumeration of *Listeria monocytogenes* Part 1: Detection Method.
- Gasarov, U.; Hughes, D. and Hansbro, P.H. (2005):* Methods for the isolation and identification of *Listeria* spp. and *Listeria monocytogenes*: a review. *FEMS Microbiol. Rev.*, 29: 851- 875
- Gelbicova, T. and Karpiskova, R. (2012):* Outdoor environment as a source of *L.monocytogenes* in food chain *Czech J. Food Sci.*30 (1):83-88.
- Gouws, P.A. and Liedemann, I. (2005):* Evaluation of diagnostic PCR for the detection of *Listeria monocytogenes* in food products. *Food Technol. Biotechnol.*, 43, 201–205.
- Gray, M. J.; Zadoks, R.N.; Fortes, E.D.; Dogan, B.; Cai, S.; Chen, Y., et al. (2004):* *L. monocytogenes* isolates from foods and humans form distinct but overlapping populations. *Appl. Environ. Microbiol.* 70, 5833–5841.
- Halberg Larsen, M.; Dalmasso, M.; Ingmer, H.; Langsrud, S.; Malakauskas, M. and Mader, A. (2014):* Persistence of foodborne pathogens and their control in primary and secondary food production chains. *Food Control* 44, 92–109
- Hindawi Veterinary Medicine International Volume (2022):* Article ID 3206172, 5 pages 5340-5355.
- Hitchins, A.D. (1995):* *Listeria monocytogenes*. In 8th ed. *Food and Drug Administration. Bacteriological Analytical Manual.* AOAC International Pub. Co., Gaithersburg, MD, USA
- Ikeh, M.A.C.; Obi, S.K.C.; Ezeasor, D.N.; Ezeonu, I.M. and Moneke, A.N. (2010):* Incidence and pathogenicity profile of *Listeria* spp. isolated from food and environmental samples in Nsukka, Nigeria. *Afr J Biotechnol* 9:4776-4782.
- Kalrey, D.R.; Warke, S.R.; Kurkur, N.V.; Rawool, D.B. and Barbuddhe, S.B.*

- (2008): *Listeria* species in bovine raw milk: A large survey of central India. *J. Food Control*, 19: 109-112.
- Karakolev, R. (2009):* Incidence of *Listeria monocytogenes* in beef, pork, rawdried and raw-smoked sausages in Bulgaria. *Food Control.*, 20, 10, 953-955.
- Kells, S., and A. Gilmour. (2004):* Incidence of *Listeria monocytogenes* in two milk processing environments and assessment of *Listeria monocytogenes* blood agar for isolation. *Int. J. Food Microbiol.* 91:167-174.
- Khan, J.A.,; Rathore, R.S.; Khan, S. and Ahmad, I. (2013):* In vitro detection of pathogenic *Listeria monocytogenes* from food sources by conventional, molecular and cell culture method *Braz. J. Microbiol.* vol.44 no.3 São Paulo July/Sept.
- Khan, J.A., Rathore, R.S., Khan, S., Ahmad, I. (2014):* In vitro detection of pathogenic *Listeria monocytogenes* from food sources by conventional, molecular and cell culture method. *Braz.J. Microbiol.*, 44(3):751-759
- Kumar V,; Warke, S.R.; Kurkur, N.V.; Rawool, D.B. and Barbuddhe, (2015):* Expression of RCK2 MAPKAP (MAPK-activated protein kinase) rescues yeast cells sensitivity to osmotic stress. *Microb Cell Fact* 14:85
- Liao, J.; Guo, X.; Weller, D.L.; Pollak, S.; Buckley, D.H.; Wiedmann, M.; Cordero, O.X. (2021):* Nationwide Genomic Atlas of Soil-Dwelling *Listeria* Reveals Effects of Selection and Population Ecology on Pangenome Evolution. *Nat. Microbiol.* 6, 1021-1030.
- Lecuit, M., Nelson, D.M., Smith, S.D., Khun, H., Huerre, M., Vacher-Lavenu, M.C., Kells, j. and Gilmour, A. (2004):* Incidence of *Listeria monocytogenes* in two milk processing environments and assessments of *Listeria monocytogenes* blood agar for isolation. *Int.J. Food Microbiol*, 91: 167-174.
- Lianou, A., and Sofos, J.N. (2007):* A review of the incidence and transmission of *Listeria monocytogenes* in ready-to-eat products in retail and food service environments. *J. Food Prot.* 70, 2172-2198.
- Lida, L.; Abazar, P.; Gholamreza, I. and Jamileh, N. (2014):* Polymerase chain reaction (PCR)-based detection of *hly* and *plc-A* genes in *Listeria monocytogenes* isolated from dairy and meat products in Iran. *African Journal of Microbiology Research.* Vol.8(10), 1098-1101
- Marrouf, A.A., El-Bealawy, M.A., Moubarak, M.G. (2007):* Some studies of listeriosis in sheep at El-Kaliobia Phenotypic and genotypic characterization of *Listeria* species isolated from chicken and milk products 104 government. *J. Egypt. Vet. Med. Assoc.* 67 (4):27-40 .
- Melanie, R. and Siegfried, S. (2001):* High incidence of *Listeria monocytogenes* in European red smear cheese. *Int. J. Food Microbiol.*, 63, 1-2, 91-98.
- Mohamed, M.M. (2010):* Occurrence of *Listeria monocytogenes* in raw milk and dairy products in Noorabad, Iran. *Journal of animal and Veterinary advances* 9 (1):16-19
- O'Connor, L.; O'Leary, M.; Leonard, N.; Godinho, M.; O'Reilly, C.; Egan, J. and Mahony, R. (2010):* The characterization of *Listeria* spp. isolated from food products and the food-processing environment. *Letters in Appl. Microbiol.* 51:490-498.
- NCCLS. (1999):* National Committee For Clinical Laboratory Standards. Performance Standards for Antimicrobial Disk and Dilution Susceptibility Tests for Bacteria isolated from animals .Approved

- Standard M31-A. NCCLS, Wayne, USA
- Olsen, J.E.; Aabo, S.; Hill, W.; Notermans, S.; Wernars, K.; Granum, P.E.; Popovic, T.; Rasmussen, H.N. and Olsvik, F. (1995): Probes and polymerase chain reaction for detection of food-borne bacterial pathogens. *Int. J. Food Microbiol.*, 28: 1-78.
- Ooi, S.T. and Lorber, B. (2005): Gastroenteritis due to *Listeria monocytogenes*. *Clin. Infect. Dis.*, 40, 1327-1332
- Poimenidou, S. V., Chatzithoma, D.-N., Nychas, G.-J., and Skandamis, P. N. (2016a): Adaptive response of *Listeria monocytogenes* to heat, salinity and low pH, after habituation on cherry tomatoes and lettuce leaves. *PLoS ONE* 11:e0165746. doi: 10.1371/journal.pone.01657
- Poimenidou, S.V., Chrysadaku, M., Tzakoniati, A., Bikouli, V. C., Nychas, G.-J. and Skandamis, P. N. (2016b): Variability of *Listeria monocytogenes* strains in biofilm formation on stainless steel and polystyrene materials and resistance to peracetic acid and quaternary ammonium compounds. *Int. J. Food Microbiol.* 237, 164–171.
- Rahimi, A. Tukmechi, and E. Rashidian, (2020): "Use of touchdown polymerase chain reaction to enhance the sensitivity of *Brucella melitensis* detection in raw milk," *Animal Biotechnology*, vol. 10, no. 1–6,
- Reissbrodt, R. (2004): New chromogenic plating media for detection and enumeration of pathogenic *Listeria* spp. an overview. *Int. J. Food Microbiol.*, 95: 1-9.
- Renato, H.; Orsi, T.; Bergholz, M.; Martin, W. and Kathryn, J.B. (2015): The *Listeria monocytogenes* strain 10403S BioCyc database Database, 2015, 1–11.
- Robinson, R.K., Batt, C.A. and Patel, P.D. (editors) (2000): *Encyclopedia of Food Microbiology*. San Diego, CA: Academic Press.
- Sambrook, J., Fritsch, E.F., Maniatis (1989): *Molecular cloning. A laboratory manual*. Vol. 1, Cold Spring Harbor Laboratory Press, New York.
- Şanlıbaba, P. and B.U. Tezel. (2018): Prevalence and characterization of *Listeria* species from raw milk and dairy products from Çanakkale province. *Turk. J. Agric. For.* 6: 61-64.
- Sarfraz, Y. Ashraf, and S. Ashraf, (2017): "A review: prevalence and antimicrobial susceptibility profile of *Listeria* species in milk products," *Matrix Science Medica*, vol. 1, no. 1, pp. 3–9,
- Sepahvand, F; Rashidian, E; Jaydari, A and Rahimi, H (2022): Short Communication: Prevalence of *Listeria monocytogenes* in Raw Milk of Healthy Sheep and Goats.
- Self, J.L.; Conrad, A.; Stroika, S.; Jackson, A.; Whitlock, L.; Jackson, K.A.; Beal, J.; Wellman, A.; Fatica, M.K.; Bidol, S. (2019): Multistate Outbreak of Listeriosis Associated with Packaged Leafy Green Salads, United States and Canada, 2015–2016. *Emerg. Infect. Dis.* 25, 1461–1468.
- Shen Y, Naujokas M, Park M, Ireton K (2000) InIB-dependent internalization of *Listeria* is mediated by the Met receptor tyrosine kinase. *Cell* 103: 501–510.
- Sleator, R.D.; Wemekamp-Kamphuis, H.H.; Gahan, G.M.; Abee, T. and Hill, C. (2005): A PrfA-regulated bile exclusion system (Bile) is a novel virulence factor in *Listeria monocytogenes*. *Mol. Microbiol.*, 55, 1183–1195
- Theivagt, A.E., Friesen, J.A. (2006): "Purification and characterization of *Listeria monocytogenes* HMG-CoA reductase" *FASEB Journal* 20 (4, Part 1): A472 MAR 6 2006
- Todar, K. (2009): "*Listeria monocytogenes*". *Todar's Online Textbook of Bacteriology*. n page,

- htt:// text book of bacteriology.net/Listeria.html.
- U.S. Centers for Disease Control and Prevention *Listeria (Listeriosis)* (2022): Available online: <https://www.cdc.gov/listeria/outbreaks/enoki-mushrooms-03-20/index.html> (accessed on 19
- Vera A, Gonzalez G, Dominguez M. and Bello H. (2013): Main virulence factors of *Listeria monocytogenes* and its regulation. *Rev Chilena Infectol.* 30:407- 416.
- Vilar, M.J.; Yus, E.; Sanjuan, M.L.; Dieguez, J.L.; Rodriguez-Otero, F.J. (2007): Prevalence of and risk factors for *Listeria* species on dairy farms. *J Dairy Sci*, 90, 5083-5088.
- Ward, T.J.; Evans, P.; Wiedmann, M.; Usgaard, T.; Roof, S.E. and Stroki, S.G. (2010): Molecular and Phenotypic Characterization of *Listeria monocytogenes* from US Department of Agriculture Food Safety and Inspection Service Surveillance of Ready-to-Eat Foods and Processing Facilities. *J. Food Protection.* 73:861-869.
- Xiaolong Cao a,b, Yi Wang b, Yan Wang b, Changyun Y e b (2017): Isolation and characterization of *Listeria monocytogenes* from the black head gull feces in Kunming China *Journal of and Public Health* 11(2018)59–63
- Yao L., Yiping Lu Bo Ning Xiaomin Su Binru Yang Haiqing Dong Bo Yin Zhiqing Pang and Shun Shen (2022): Intravenous Delivery of Living *Listeria monocytogenes* Elicits Gasdmermin-Dependent Tumor Pyroptosis and Motivates Anti-Tumor Immune Response *ACS Nano* 2022, 16, 3, 4102–4115

الشكل الظاهري والجيني للستيريا مونوسيتوجين المعزولة من اللبن الخام في مدينة أسيوط

أمل إسحاق جرجس ، ماري رأفت حافظ ، زينب أحمد ، محمد سحر جمال عبد العزيز ،
أزهار محمد حسن ،

E-mail address@azharhassan769 gmail.com Assiut University web-site: www.aun.edu.eg

أصبحت الليستريا المستوحدة ذات أهمية متزايدة كعامل ممرض مرتبط بالغذاء. يمكن أن يسبب مرضاً نادراً ولكنه خطير يسمى الليستريات مع معدلات وفيات عالية (٢٠-٣٠٪) مقارنة بمسببات الأمراض الميكروبية الأخرى المنقولة بالغذاء. غالباً ما يرتبط تفشي الليستريات بالألبان ومنتجاتها. تهدف هذه الدراسة إلى مراجعة النمط الظاهري والوراثي للستيريا المستوحدة المعزولة من اللبن الخام في مدينة أسيوط للسيطرة على الليستريات ، وكانت أهداف هذه الدراسة تحديد مدى انتشار *L. monocytogenes* المصدر المختلف للبن الخام (٢٠ لبن السوق ، ٤٠ لبن جاموسى و ٤٠ لبن بقري) وتقييم القدرة الممرضة للعزلات من خلال تحديد ثلاثة جينات مرتبطة بالضراوة (*hlyA* و *inIB* و *prfA*) وتسلسلها. تم تخصيب العينات أولاً باستخدام طريقة التخصيب في مرق فريزر ، تليها الإنماء على *ALO*A® Merck أجار. للتحديد النهائي للمستعمرات المشتبه فيها ، تم استخدام طريقة اختبار البلمرة المتسلسل المتعدد. لتقدير حدوث ومستويات الليستريا النيابية ، من عدد ١٠٠ عينة عشوائية تم جمعها من مصادر مختلفة ، ٢٠ عينة معزولة من اللبن الخام في السوق ، ٤٠ من ألبان الجاموس الخام و ٤٠ من ألبان البقر الخام. فقط ٨ (٠,٤٠٠٪) و ٦ (٠,١٥٠٪) و ١١ (٠,٢٧٥٪) من العينات التي تم جمعها من لبن السوق والجاموس والأبقار الخام على التوالي ، يشبه في أن تكون العزلات المشتبه بها والمكتشفة على أجار أكسفورد ألوا هي *Listeria spp*. أظهر اختبار الحساسية لمضادات الميكروبات أن مستخلصات *L. monocytogenes* المعزولة حساسة للسلفاميثوكسازول - تريمتوبريم (SXT) (وسبيروفلوكساسين (CIP) متبوعاً بالكورامفينيكول (C) ، حساسية ضعيفة للجنتاميسين (CN)) ، بينما كانت مقاومة للإريثروميسين (E) و (Amoxicillin (AX).

أظهرت نتائج اختبارات سلالات الليستريا المعزولة أن الليستريا مونوسيتوجينز كانت سلالات خبيثة حيث كان بعضها إيجابياً لاختبار CAMP. أظهرت نتائج تحليل تفاعل البلمرة المتسلسل (PCR) لعزلات الليستريا منطقة ضيقة من انحلال الدم β على أجار دم الأغنام.

تم تحديد التلوث بـ *L. monocytogenes* في اللبن الخام مع الأخذ في الاعتبار الخصوصية العالية والحساسية للمقاييس متعددة الإرسال PCR المستخدمة ، وهي الطريقة الأكثر دقة لتحديد *L. monocytogene*