

Dept. of Fish Diseases and Management,  
Faculty of Veterinary Medicine, Cairo University.

**MONITORING OF SEASONAL PARASITIC AND  
MYCOTIC PROBLEMS AFFECTING CULTURED  
OREOCHROMIS NILOTICUS UNDER SEMI-  
INTENSIVE SYSTEM**  
(With 3 Tables and 18 Figures)

By

**M.S. MARZOUK; M.A. ABDELAZIZ; M. MOUSTAFA  
and SOFIA ABOTORKIA\***

\*Alfateh University, Libya.

(Received at 25/2/2010)

**رصد المشاكل الطفيلية والفطرية في مزارع البلطي النيلي شبه المكثف**

**محمد سيد مرزوق ، محمد عبد العزيز أحمد ، محمد مصطفى محمد  
صوفيا الهادي**

أجريت هذه الدراسة علي عدد 1000 سمكة من نوع البلطي النيلي في جمهورية مصر العربية والتي تم جمعها من أحواض سمكية في منطقة الشرقية (مركز بحوث الثروة السمكية بالعباسة) وبعض الأحواض السمكية الخاصة في نفس المنطقة والتي تعيش تحت نظم الأستزراع شبه المكثف. أظهرت هذه الدراسة أن الأعراض الإكلينيكية الظاهرة في الأسماك المصابة كانت كالتالي: وجود أنزفة متفرقة على كامل جسم السمكة والتي تتمركز في منطقة الفم والخياشيم وحول فتحة الشرج وجذور الزعانف. بالإضافة إلي تقرحات ودكانة لون الجلد ووجود مناطق خالية من الفشور وتآكل الزعانف خاصة الذيلية منها، تمدد منطقة البطن (إستسقاء بطني)، جحوظ العين وعمتها، كما سجلت وجود مادة بيضاء قطنية علي كامل جسم السمكة. أما الصفة التشريحية فبينت وجود إحمرار ونقط نزفية في معظم الأعضاء الداخلية (الكبد، الطحال، الأمعاء، والكلي) ووجود نقط تتركز وتحلل في بعض هذه الأعضاء، بالإضافة إلي زيادة في حجم المرارة ، شحوب أو إحمرار في الخياشيم مع زيادة الإفرازات المخاطية. تبين من خلال هذه الدراسة أصابة عدد ( 721 ) من الأسماك بالطفيليات. والتي تم عزلها والتعرف عليها على النحو التالي: الأوليات: تراكودينا وكانت نسبة الإصابة الكلية ( 42%)، وأعلى معدل أصابة كانت في فصل الصيف (42.5%). تريماتود، ومنها: أ - تريماتود وحيدة العائلة (سيكليدوجايرس ليبريانس وسيكليدوجايرس أرثراكانثرس) حيث بلغت نسبة الإصابة بهما (28%)، وكانت أعلى معدل أصابة في فصل الربيع (38%). ب- تريماتود ثنائية العائلة ومنها: ▪ سننروسيسستس: حيث بلغت نسبة الإصابة ( 5.9%) وأعلى معدل أصابة في فصل الربيع (6.4%). ▪ الميتاسيركارية المتحوصلة لديدان الكليوستومام: حيث بلغت نسبة الإصابة (5.2%) وأعلى معدل أصابة في فصل الشتاء (7.2%). ▪ الميتاسيركارية المتحوصلة لديدان الإيوكليينوستومام: حيث بلغت نسبة الإصابة ( 4.9%) وأعلى معدل أصابة في فصل الربيع (8.8%). - نيماتودا: تم عزل والتعرف علي ديديان كل من: ▪ الأكانتوسيفلا: حيث بلغت نسبة الإصابة ( 7.5%) وأعلى معدل أصابة كانت في فصل الخريف (8.8%).

ميرقات الكونتراسيكم: حيث بلغت نسبة الإصابة ( 3%)، وأعلى معدل إصابة في فصل الخريف (8.8%). 4- القشريات: تم عزل والتعرف علي: الإيرجاسيلس (مجدافيات الأرجل): حيث بلغت نسبة الإصابة (4.9%) وأعلى معدل إصابة في فصل الربيع (8.8%). تبين كذلك من خلال الدراسات إصابة عدد ( 80 ) من الأسماك بفطر السابرووليجنيا، حيث كانت أعلى معدل إصابة في فصل الشتاء ( 43%). من هذه الدراسة من الممكن استنتاج مدى انتشار الأمراض الطفيلية وبصورة أقل الأمراض الفطرية في أسماك البلطي النيلي المستزرعة تحت نظام الأستزراع شبه المكثف بمنطقة العباسة محافظة الشرقية والذي يمكن ايعازه الى عدم تطبيق نظم الرعاية بشكل متكامل. وقد اظهرت النتائج أيضاً أن نهاية فصل الربيع وفصل الصيف يمثلان أوقاتاً حرجة لحدوث الأمراض الطفيلية كما أن النتائج توضح أيضاً مدى خطورة مشكلة مرض السابرووليجنيا على أسماك البلطي وبخاصة في فصل الشتاء والذي يصاحبه معدلات تفوق وخسارة اقتصادية عالية. لذا فان تطبيق نظم الرعاية الأساسية من جودة المياه والتغذية المثلى واستخدام منشطات المناعة قبل الفترات الحرجة لحدوث تلك الأمراض سوف يحد من التأثيرات السلبية لتلك الأمراض.

## SUMMARY

The study was carried out on 1000 Tilapia (*O. niloticus*) collected from private and governmental semi intensive earth pond (Central Laboratory for Aquatic Research laboratory (Abbassa) in Sharkia Province, through the seasons of the year 2008. The clinical signs and post mortem lesions of diseased fish were recorded. Results of the study revealed that (721) and (80) fish were found to be infected with different types of parasites and fungal infection respectively. The isolation and identification of parasites in infected fish including the following, 1-Protozoa: (Trichodina sp. in a percentage (42%), of total parasitic disease in fish examined. The research showed that *Trichodina* sp. represented the highest rate of infection was observed in summer season (64.8%). 2-Trematodes: a-Monogenia (*Cichlidogyrus liberianus* and *Cichlidogyrus arthracanthus* (28%), the highest rate of infection was observed in spring season (38%). b-Digenean encysted metacercaria (Centrocestes (5.9%), Clinostomum (5.2%), Euclinostomum (4.9%)), and the highest rate of infection were observed in spring (6.4%), winter (7.2%) and spring (8.8%) respectively 3-Nematodes: a-Acanthocephala (7.5%) and the highest rate of infection was observed in autumn season (8.8%). b- Contraeaecum (3%) and the highest rate of infection was observed in autumn season (4.8%). 4-Crustacea (Ergasilus (4.9%) and the highest rate of infection was observed in spring season (8.8%). The isolation and identification of mycotic diseases in infected fish revealed that the Seasonal prevalence of saprolegniosis showed that the highest rate of infection was observed in winter season (43.7%). From this study it could be concluded the wide spread of parasitic diseases and to lesser

extent the mycotic one in cultured *O. niloticus* under semi intensive system in Sharkia province which may be due to the improper management practice in such farms. The results revealed that late spring and summer are critical times for the occurrence of parasitic diseases, At the same time the rigorousness of saprolegniosis on *O. niloticus* specially in winter season which is associated with severe mortalities and high economic losses must be considered. So the application of the ideal system of management including good quality water, proper nutrition and using of immunstimulant will decrease the negative impacts of such diseases in their critical times of occurrence.

**Key words:** Parasitic, mycotic, *Oreochromis niloticus*.

## INTRODUCTION

Tilapia are sometimes referred as aquatic chicken due to their high growth rate, adaptability to a wide range of environmental conditions, ability to grow and reproduce in captivity as well as feed on low tropic level. As a result, these fishes have become excellent candidates for aquaculture, especially in tropical and subtropical regions and the number of farms has been increasing annually all over the world (Newai *et al.*, 2008).

Fish diseases are substantial sources of monetary losses to aquaculturists. Production costs are increased by fish disease outbreaks because of the investment lost in dead fish, cost of treatment, and decreased growth during convalescence. In nature awareness to fish disease problems are less than in captivity because diseased fishes are quickly removed from the population by predators. So causatives agents of diseases are of minimal significance under natural conditions, but can cause substantial problems when fishes are crowded and stressed under culture conditions Ruth (1990), De Buron and Roumillat (2010).

Plumb (1999) mentioned that infectious diseases are among the most serious constraints to warm water aquaculture. Woo (2006), Cedric and Neil (2007) mentioned that Parasites are causative agents of diseases with great importance in farmed fish by causing little apparent damage in fish populations, leading to pathological changes, decrease of fitness or reduction of the market value of fish, so parasites may have considerable impact on growth and behavior of fish, their resistance to other stress factors, susceptibility to predation and reduction of marketability that is why Freshwater parasites are very great ecological

importance, as suggested by their great diversity, and by their often high prevalence and intensities of infection.

The parasitic diseases of fish in warm water of subtropical and tropical countries have a superior position and have received a significant attention in Egypt (Eissa *et al.*, 2000). The parasitic diseases of cultured fishes may be the main cause of low body weight gain, decrease reproductive ability and high mortality; for example, parasitism has been shown to result in increased permanent stress responses believed to be linked to decreased disease resistance which results in increased overall performances and fish mortality from mixed infection (Bowers *et al.*, 2000; Tully and Nolan 2002).

In warm water fish the Mycotic diseases constitute one of the most important diseases causing troubles in freshwater cultured fishes with several economical losses especially Saprolegniosis, some are apparently primary pathogens, many are thought to be secondary requiring predisposing factors (Udomkusionsri, 2003, Lau *et al.*, 2009). Saprolegniosis is a serious winter disease that affects all species and ages of freshwater fishes (Stueland *et al.*, 2005). Saprolegniosis usually increases in tilapia as water temperatures drop to a near lethal level (Aly and El-Ashram, 2000). From the aforementioned data it appears that fish diseases constitute a drastic obstacle for fish production, either due to a single infection or multiple mixed infections. Therefore, the aim of the present investigation was to through the light on the following:

- 1- Isolation and identification the most important parasitic and fungal agents which are commonly associated with heavy mortality among semi intensive cultured *O. niloticus*.
- 2- Recording the seasonal prevalence and critical times of occurrence of these diseases among the examined fish.
- 3- Describing the clinical picture and Postmortem lesions which associated with these infections in naturally and experimentally infected fish.

## **MATERIALS and METHODS**

### **Material**

**Naturally infected fish:** A total number of one thousand apparently infected Nile-tilapia (*O. niloticus*) in a body weight range (25-150gm) were collected during the period from January-2008 to December-2008 during the occurrence of various mortalities in private and governmental semi-intensive earthen pond in Sharkia governorate. Fish were transferred alive or freshly dead as soon as possible to the Central

Laboratory for Aquatic Research laboratory (Abbassa). The live fish were placed in strong plastic bags with compressed air then packed in a large ice box surrounded with crushed ice. The recently dead fish specimen were kept on ice bags to be subjected to full clinical, postmortem, parasitological and mycological examinations.

**Chemicals:-** Normal physiological saline solution (0.9%NaCl) - Formalin 5% - Ascending grades of ethyl alcohol (30, 50, 70, 90% and absolute) - Clove oil – Xylene - Canada balsam - Glycerin-gelatin (1:1) - Glycerin-Alcohol (1:4) - Lactophenol (Lactic acid and phenol)– Polyvol.

**Parasite stain-**Acetic acid alum carmine according to Kabata (1985)-Gimsa stain.

**Media used for Mycotic isolates:** Sabauraud's Dextrose agar (SDA)

**Fungal stain** Lacto phenol cotton blue stain.

### **Methods**

The fish were examined directly for clinical abnormalities and post-mortem changes according to Amlacher (1970).

**I- Incidence of parasitic and fungal infections in diseased *O.niloticus*:**

**II- Seasonal prevalence of Parasites and fungus isolated from naturally infected *O.niloticus*.**

**III- Parasitological examination and identification.**

#### **1- Protozoal examination:**

Was carried out according to Lucky (1977).

#### **2- Examination of monogenetic trematodes and encysted metacercaria:**

**a- Skin examination:** This was carried out by scraping the external body surface of the examined fish, the trunk, head, eyes, nostrils, mouth and fins (dorsal, pelvic, pectoral and caudal fin) especially the part having ulcers, petechial hemorrhage, sloughed scales or slimness. The scraped material was accumulated in small petridish with a small amount of formal saline and left in refrigerator overnight for relaxation of monogenia and separated from the mucus or any debris to become ready for mounting and staining.

**b- Gill examination:** Was carried out according to Lucky (1977). Kabata, (1985).

#### **3- Examination of Nematodes:**

Smears were taken from intestinal wall, squash preparations from liver, spleen, kidney and intestinal scrapings on cover slides fixed in formalin 10% for detection of eggs, larva and adults of nematode sp. scraping of intestinal wall and was carried out according to Kabata, (1985).

**4- Examination of Crustaceae:**

Crustaceans were collected from fish gills, preserved in glycerin alcohol and fixed by glycerin gelatin the examination was carried out according to Kabata, (1985).

**IV-Mycological isolation and identification:**

Samples from infected tissues (skin, fins, gills and eyes) were obtained by sterilized forceps and inoculated into Sabauraud's Dextrose agar. Identification of pure culture was carried out according to Willough (1978).

**RESULTS**

**I- Prevalence of parasitic and fungal infections in examined**

***O.niloticus*:** The examination of naturally infected *O. niloticus* collected from the fish ponds at Abbassa fish farm revealed that the prevalence were 72.1 & 8% of parasitic and mycotic affections, respectively Table (1).

**Table 1:** The incidence of different parasitic and fungal infection in naturally infected *O. niloticus*.

Isolated organism	Total No. of examined Fish	No. of naturally infected Fish	Percentage of isolation
• Parasites	1000	721	72.10%
• Fungi		80	8.00%

**II- Seasonal prevalence of Parasites and fungus isolated from naturally infected *O.niloticus*.**

**Table 2:** Seasonal prevalence of parasites and fungus isolated from naturally infected *O.niloticus*.

Season	No of exa. Fish	Parasites								Mycotic	
		Protozoa		Trematodes		Nematodes.		Crustacea		Saprolegnia	
		No	%	No	%	No	%	No	%	No	%
Spring	250	120	48	148	59.2	23	9.2	22	8.8	12	15.0
Summer	250	162	64.8	115	46	26	10.4	9	3.6	0	0
Autumn	250	81	32.4	97	38.8	34	13.6	5	2.0	33	41.2
Winter	250	62	24.8	80	32	22	8.8	13	5.2	35	43.7

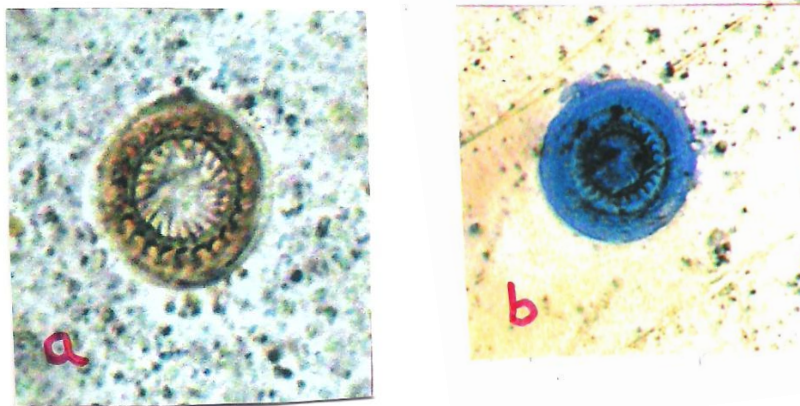
**Table 3:** Seasonal prevalence of parasitic species isolated from naturally infected *O. niloticus*

Season	No. of examined	Protozoa		Trematodes								Nematodes			
		Trichodina		Cichlidogyrus sp.		Clinostomum sp. (EMC)		Euclinostomum sp. (EMC)		Centrocestus sp. (EMC)		Acanthocephala sp.		Contraecaecum sp.	
		No	%	No	%	No	%	Fish	%	No	%	No	%	No	%
Spring	250	120	48.0	95	38.0	15	6.0	22	8.8	16	6.4	20	8.0	3	1.2
Summer	250	162	64.8	84	33.6	7	2.8	9	3.6	15	6.0	18	7.2	8	3.2
Autumn	250	81	32.4	68	27.2	12	4.8	5	2.0	12	4.8	22	8.8	12	4.8
Winter	250	62	24.8	33	13.2	18	7.2	13	5.2	16	6.4	15	6.0	7	2.8
Total	1000	425	42.5	280	28.0	52	5.2	49	4.9	59	5.9	75	7.5	30	3.0

#### **IV- Identification of isolated parasites**

##### **1- Protozoa:**

**Trichodina:** Trichodina species were observed in gills and skin scrape (Fig.1.a.b).



**Fig. 1:** Trichodina ciliated protozoa in wet mount (a) and stained with Geimsa stain (b) isolated from *O. niloticus*.

##### **2- Trematodes:**

**2- a-Monogenia:** the Microscopical examination revealed the presence of *Cichlidogyrus liberianus* (Fig.2). and *Cichlidogyrus arthracanthus* (Fig.3).



**Fig. 2:** *Cichlidogyrus Liberianus* showing attached to gill filaments on *O.niloticus*.

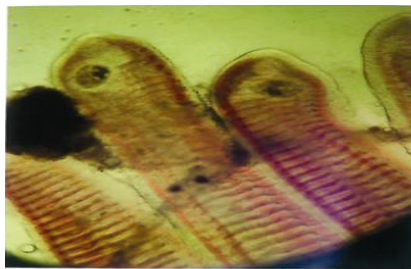




**Fig. 3:** *Cichlidogyrus arthracanthus* showing attached to gill filaments on *O. niloticus*.

### **2- d- Digenea**

The results revealed the presence of *Centrocestus* sp., *Clinostomum* and *Euclinostomum* Encysted metacercaria sp(Fig 4-5-6) The external examination of some infected *O. niloticus* revealed the presence of scattered visible yellow to orange pea like encysted metacercariae on skin and embedded in the musculature with irritated scales Metacercariae of *Clinostomum tilpiae* In spite of the large size (3–7 mm) of the clinostomatid cysts, The encysted metacercariae were detected in both skin and internal organs (branchial cavity, pharyngeal regions and gills). Metacercariae of *Euclinostomum* Encysted metacercariae were large pea sized. They were spherical in shape, dark yellowish in color and embedded in the tissues of either anterior or posterior portions of the kidneys.



**Fig. 4:** Encysted *Centrocestus* metacercariae in the gills of infected *O. niloticus*.



**Fig. 5:** Stained excysted *Clinostomum* sp larvae.



**Fig. 6:** Stained excysted *Euclinostomum* sp. larvae.

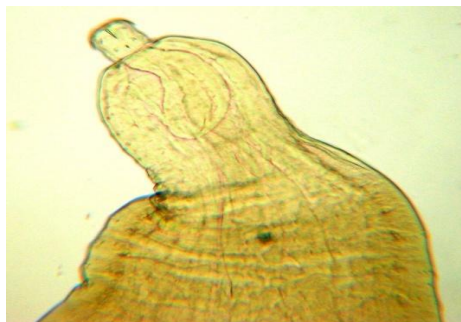
**3- Nematodes:**

**3- a- Acanthocephala:** The parasitological examination revealed the presence of *acanthocephalan tilapiae*. (Fig.7-10).

**3-b-Contracecum:** The parasitological examination revealed the presence of *acanthocephalan tilapiae*. (Fig.11-13).



**Fig. 7:** Male *Acanthocephala tilapae* in *O.niloticus*



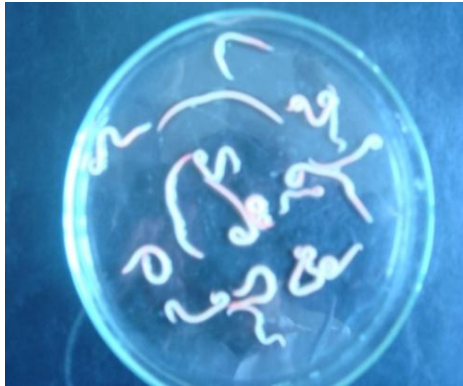
**Fig. 8:** Anterior end of *Acanthocephala tilapae*.



**Fig. 9:** Posterior end of male *Acanthocephala tilapae*



**Fig. 10:** Posterior end of female *Acanthocephala tilapae*



**Fig. 11:** *Contracaecum* sp. Larvae



**Fig. 12:** Anterior end of *Contracaecum* sp. larvae



**Fig. 13:** Posterior end of *Contracaecum* sp. larvae

**4- Crustacia:** Isolation of *Ergasilus* from *O. niloticus* was obtained from gills (Fig.14-15).



**Fig. 14:** *Ergasilus* sp. attached to the gills of *O. niloticus*.



**Fig. 15:** *Ergasilus* sp. in wet mount

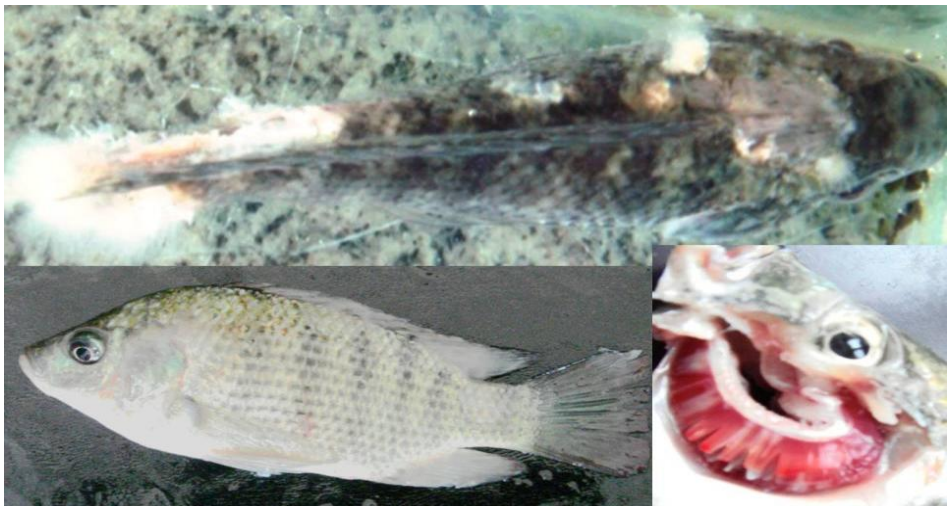
#### **VI- Identification of isolates of fungal organisms**

The results of mycological examination allowed the isolation of 80 isolates from infected *O. niloticus* sampled from skin, gills, eye, and mouth lesions of infected *O. niloticus* (Fig.16-17) showed masses of mature and immature sporangia filled with large number of sporangiospores, the hyphae appeared profusely branched and were non septated, these morphological findings were characteristic of the saprolegnia species. The characteristic appearance of *Saprolegnia* sp. on Sabauraud's Dextrose agar (Fig. 18).

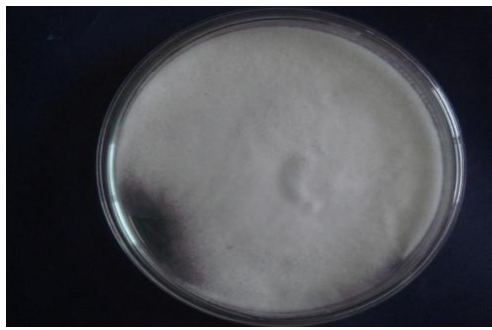




**Fig. 16:** Naturally infected *O.niloticus* showing cotton-like material on the skin.



**Fig. 17:** *Saprolegnia* sp. showing cotton-like material on the skin surface, eye, fins, gills and mouth



**Fig. 18:** *Saprolegnia* sp. on Sabauraud's Dextrose agar

## DISCUSSION

The present investigation was planned to detect the seasonal critical times for the occurrence of important parasitic and mycotic diseases that affecting *O. niloticus* under semi-intensive culture system in Sharkia Province. The detection of those critical times will help for lowering the negative impacts of such diseases.

The results showed that parasitic infestations were found to be the major problems and the most prevalent diseases infecting cultured tilapia in semi-intensive farms. The percentages of parasitic and fungal fish pathogens represent 72.5% and 8% of examined diseased fish respectively. Some of these are obligate pathogens while others are opportunistic facultative organisms producing disease when fish health is compromised by injury or environmental stressors (Plumb, 1999). The results agree with El-Nobi (1998) and this could be attributed to the pond management, including poor water quality, improper nutrition and other stressors affecting *O. niloticus*.

Regarding the isolated parasites, Protozoa are the most prevalent Parasitic diseases of *O. niloticus*, Ruth (1990). Tricodinids are the most commonly encountered symbiotic groups in the aquatic environment. They found mainly on the skin and gills, either as parasites or as commensals and show very little host specificity (Woo, 2006). The results of parasitological examination and identification revealed the presence of *Trichodina* sp. in a percentage (42.5%) of total parasitic disease in fish examined. The research showed that *Trichodina* sp. represented the highest rate of infection among detected parasites in *O. niloticus*, the results agree with (El- Gawady *et al.*, 1992) and Younis (1999).

Dealing with the seasonal dynamics of *Trichodina* sp. parasite in the examined fish, it was clear that the higher prevalence was observed in summer season (64.8%), followed by spring (48%), then autumn (32.4%) and the least percentage was recorded in winter (24.8%). These results were similar with that obtained by Brewster (1997); El-Nobi (1998); Morozinska (2002) and Attia (2004). The higher prevalence of *Tichodina* infection among Tilapia during summer and spring seasons could be attributed to the high organic matter and the high temperature which are more suitable for parasite reproduction, while in winter the water temperature decreased and the parasitic prevalence consequently decreased (Attia 2004; Awad, 2007). On the other hand, Ramadan (1991); Mesally (1994); Salah *et al.* (1995) and Woo (2006) mentioned that winter and spring was found to be the season for sever *Trichodina*

infection in fishes which stressed by harsh winter conditions and the lowest percentage of infection was recorded in summer. The results also revealed that the main clinical signs observed in heavily infected *O. niloticus* may exhibited a grayish-blue color, formed by excessive mucus secretion in skin, gills and peeled epithelia, sluggish swimming. The excessive epithelial growth is believed to be a protective reaction, from the fish against the parasite. The results of Trichodina infection in the examined fish proved the drastic damage on the skin and gill epithelium. Similar signs were coincided with the description given by Noga (1996); Paperna (1996); Attia (2004); Awad (2007) and Abd El-Ghany *et al.* (2009).

The results of parasitological examination and identification revealed the presence of gill monogeneans at percentage (28%) of total parasitic disease in examined *O. niloticus*. This result was almost in agreement with El-Gawady *et al.* (1992) and Dewra (1995). A higher percentage was recorded by El-Gohary (2000) which was (80%), (78.9%) respectively. The variation in prevalence may be attributed to season, locality, physiological status of examined fish and environmental factors. The results revealed that the seasonal prevalence of monogenetic trematodes was highest in spring season (38%), followed by summer (33.6%), Autumn (27.2%) and then in Winter (13.2%). These results were similar with that recorded by El-Nobi (1998); El-Gohary (2000); Attia (2004) and Awad (2007) this result may be due to that during warm seasons the climate temperature is suitable for the life cycle of the parasites.

The clinical signs observed in heavily infected *O. niloticus* with ectoparasitic monogenea usually results in excessive mucus, loss of appetite, sluggish movements and the fish swam near the surface of water. The infested fishes showed increased breathing frequency, and the gill covers were stretched open widely. The gills were pale in some fishes, hyperemic in others and covered with mucus secretions forming cloudy film of slime. Infested fishes were anemic and the fins were ragged with partial detachment of scales. Microscopically, the monogeneans were found attached to the gill filaments. Such obtained results are nearly similar those of these clinical signs may be attributed to the organs of attachment and mode of feeding of monogenia. The hamuli, marginal hooklets, suckers and clamps of monogeneans all have direct contact with host tissue and may afflict mechanical damage directly. These result supported those of Attia (2004); Woo (2006); Awad (2007) and Abd El-Ghany *et al.* (2009).



The results noticed in this work proved that mixed infection of Trichodina and monogeneans were more prevalent. However, monogenea can serve as vectors for viral and bacterial pathogens of fish which provided a portal of entry for invasive bacteria due to damage of the fish epithelium. Also, because they propagate and transferred rapidly between fishes under farming conditions this may be leading much damage to high morbidity and mortality. These were proved previously by Cusack and Cone (1986).

The results of parasitological examination and identification revealed the presence of three types of digenean encysted metacercariae in examined *O. niloticus*. *Centrocestus* sp. represented the highest one at percentage (5.9%) of total parasitic disease in examined fish. The results proved seasonal fluctuations among the examined fish. It was especially high during the warm season of the year in fresh water due to active shedding of cercariae. Similar observation was reported by Paperna, (1996); El-Nobi, (1998); Attia, (2004) and Awad, (2007), the last author recorded that encysted metacercaria (*Centrocestus formosanus*) were found in gills of black carp at the prevalence of 100% along the year. This may be attributed to the high abundance of the intermediate snail host in the examined earthen ponds in which black carp were reared.

The results revealed that *Centrocestus* species encysted metacercariae were detected in the gills of *O. niloticus* without any clinical signs in low infection rate. While the main clinical signs observed in heavily infested fish were respiratory distress, decreased feed intake and increased mucus secretion. The infected area showed inflammatory reaction especially in early infestation or when the cyst, was ruptured. This condition might represent a response to prolonged irritation by the parasite and its toxic product or the hyperplasia of chondrocytes or may be due to decrease the oxygen tension in the affected area (Attia 2004; Awad 2007 and Abd El-Aal *et al.*, 2008).

Low infection rates were recorded for *Clinostomum* and *Euclinostomum* spp. at percentage (5.2%) and (4.9%) respectively. Results of the previous related studies, Abd-Alkareem (2000) found the prevalence rate was (4.4%) and (0.5%) respectively. Yimer (2000) found (9.09%) of *Clinostomum* and only 1 *Euclinostomum* species from all investigated fish. who found that 34% and 29% of this fish species were infected with these types of metacercariae, respectively; and that of Abd El Rahman (2005), who found that 45% and 11.8% of *O. niloticus* were infected with *Clinostomum* species and *Euclinostomum* species metacercariae, respectively. This can be referred to the difference in

sampling periods and the ponds from which the examined fishes were obtained. The results also revealed that the seasonal prevalence of *Clinostomum* species and *Euclinostomum* species were during winter and spring seasons respectively. This may be due to the suppressed immunity of the cultured fish during cold temperature. It is worth to mention that extrapolation of seasonal variations from direct counts of larvae in fish since such infections normally persist for over 12 months, these results are in line with several authors as El-Nobi (1998); Attia (2004) and Woo (2006).

The results also revealed that the main clinical signs of *Clinostomum* infection observed in moderate and higher intensity of infection which showed debility, retarded growth, excessive mucus secretion, increased in the opercula movement and protrusion of operculum. Yellowish to orange color, pea like cyst were found scattered on skin and in bronchial cavity. In case of heavy infection, cysts were arranged in agape-like cluster. In dead tilapias, larvae encysted and moved over the mesentery and on skin. On the other hand, pathological impact of infection with *Euclinostomum* was not often obvious and depended on their number. Few cases showed related growth, abdominal distention and reddish ascetic fluid in the abdominal cavity, which could be attributed to functional damage of kidney. *Euclinostomum* was found distributed along the kidneys of infected tilapia in the form of grayish cyst. Congestion of infected kidneys was also observed. The present data were in agreement with previous observations (Paperna 1996; Abd El Rahman 2005; Abd El-Aal *et al.*, 2008).

The results of parasitological examination and identification revealed the presence of *Contracaecum* nematode at percentage (3%), it was higher during autumn (Abu-El-Ezz, 1988) While, Varjabedian (1993) mentioned that the majority of nematodes, reached their peak of infection during spring and summer, Aloo (2002) mentioned that no seasonal changes was recorded in infection level. This phenomenon may be attributed to many factors interacted together such as water temperature, fish host length, sex and feeding habits and propagation of the intermediate hosts and each nematode parasites had its own season of prevalence that varied in different hosts.

The results also revealed that the main Clinical signs of *Clinostomum* infection observed the located of *Contracaecum* species larvae in the abdominal cavity causing abdominal distention. Also, the effect results from mechanical damage to the internal organs and production of toxic substances. Larvae penetrate in to the intermediate

host's body through the wall of digestive tract and lead to its death, inflammatory response of digestive tract and pressure on internal organs. Intestine was voided from food. In severe infections, low body gain is common sign. Nematodes may not even show signs of illness, but they often have reduced reproductive capacity. The present result nearly coincided with that recorded by Abu-El-Ezz (1988); Moravec (1994) and Barson (2004).

*Acanthocephala tilapiae* was observed in a high prevalence as parasitic infection that varied from the other parasites and another of all host species analyzed (Ayotunde 2007; Omar *et al.*, 2008). The results of parasitological examination and identification revealed the presence of *Acanthocephala tilapiae* at percentage (7.5%) that was prevalent during autumn. While Gihan (1999) recorded that the highest rate was in spring followed by autumn. (Omar *et al.*, 2008) showed that high prevalence of *Acanthocephala tilapiae* was observed in all host species analyzed. They mentioned that worms appear to be recruited in the summer, develop and mature through the winter, and reproduce sexually in late winter and spring. In addition Differential exposure to parasites and host susceptibility may explain the marked variation in parasite abundance among hosts. There were no clinical signs in light infection with *Acanthocephala tilapiae* parasite. While, there were signs of emaciation and congested intestine in heavy infection. These findings associated with infection are in harmony with those recorded by Kabata (1985). In the final host the Pathogenicity of acanthocephala is related to the mode of attachment of the parasite species and to the systematic affiliation of the host. Long necked acanthocephalans which deeply penetrate into or through the intestinal wall with their presoma are more pathogenic than species with a short neck and a shallow mode of anchorage (Kabata 1985; Woo 2006).

The results of parasitological examination and identification revealed the presence of *Ergasilus* sp. at percentage (4.9%), a higher prevalence was recorded in spring. While Mostafa *et al.* (1991) and Molnar *et al.* (1997) recorded that high level of *Ergasilus* infestation in summer and autumn seasons. This could be related to the environmental conditions and the presence of the infective copepodids.

The results also revealed that the main clinical signs of *Ergasilus* infection were pale gills in mild to moderate infestation, erosion, degeneration and necrosis in gill filaments in sever cases, gills damage that resulted in loss of surface area for respiration and lead to suffocation, particularly at high water temperature and Excessive

accumulation of mucus in the gill, This in turn may result in reduced growth rates and greater mortality (Grabda 1991; Mostafa *et al.*, 1991; Molnar *et al.*, 1997; Abd El-Rahim 1998; Woo 2006).

The results of mycological examination and identification revealed the presence of mycotic infection at percentage 8% of total diseased examined fish. This may be due to the fact that most of the serious mycotic pathogens are mostly secondary in nature and need great stress on such cultured fishes in order to find the porta of entry for producing a disease. The stress factors usually include environmental fluctuations and improper management practices with poor water quality (Udomkusonsri, 2003). The wet mounts from skin and gill tissues of infected *O.niloticus* showed the presence of large non-septet tubular cells. Spores of the fungi attach to injured or unhealthy tissue and establish a colony (mycelium). Microscopically, the identified agent was *Saprolegnia diclina* which found among *O. niloticus* in the examined semi-intensive farms in the winter season specifically. This disease (Saprolegniosis) is a serious disease that affects all species and ages of freshwater fishes and can also affect many estuarine fish (Woo and Bruno 1999; Aly and El-Ashram 2000; Polacheck 2007; Woo 2007). The low temperature constitutes a great stress factor affecting the health condition of *O.niloticus* and renders them prey to *Saprolegnia* fungus. (Mesallhy 1994; Naguib 1994; Aly *et al.*, 1996; Aly and El-Ashram 2000; Polacheck 2007; Osama *et al.*, 2008; Zaki *et al.*, 2008).

The results revealed that the signs of *Saprolegnia* infection including general external signs which appeared anywhere on the body surface, fins, eyes and gills. The infected fish often develop grayish-white cotton-like growths on skin, fins, gills and eyes. The diseased fish showed hyperactivity and obvious evidence of irritation such as rubbing against the sides or bottom of tank which may be attributed to the inflammatory reactions, erythema at the base of fins, ulceration of the skin, this may be due to toxin secreted by *saprolegnia* hyphae, oomycete or zoospores due to fungal cells (hyphae) invade the injured tissue from which they infect surrounding healthy tissue. Also, loss of equilibrium with nervous signs, blindness, and enlargement of abdominal were also recorded. Evidence of respiratory distress was recorded. The gills appeared pale in colour with profuse mucus and covered by tufts of fungi. The same findings were also recorded by (Ruth 1990; Aly and El-Ashram 2000; Udomkusonsri. 2003; Osama *et al.*, 2008; Zaki *et al.*, 2008). The observed pale color of gills could be due to the coating of the

gills by profuse mucus, necrotic debris and secondary mycosis (Plump 1997).

In conclusion, the result of this work proved the wide spread of parasitic and to lesser extent fungal infections in the *O. niloticus* cultured under the semi-intensive system in the earthen ponds. The wide spread of such pathogens are due to the improper management practice. The results revealed that summer and late spring are critical times for the occurrence of parasitic diseases. At the same time the problem of saprolegniosis in winter season represents an important problem for *O. niloticus* semi intensively cultured in earthen ponds, especially after the days of severe cold weather fronts. A sever economical impact could be waited from the heavy fish mortality and high fish loss, so proper managemntal practices should be applied during these critical times that render *O. niloticus* susceptible for the occurrence of such diseases. Raising of water column, continuous flow of water in the days of sever cold weather as well as incorporation of immune-stimulant in fish ration could aid in avoiding of such loss by raising the fish resistance against these parasites and fungal agents.

## REFERENCES

- Abd-Alkareem, O.M.A. (2000):* Clinical investigation of digenean metacercarial infestation in tilapia in the High Dam Lake, Egypt. Thesis, M.V.Sc., Vet. Med., Assiut Univ., Egypt.
- Abd-Al-Aal, Z.; Amer, O.H.; Badawy, A.I.I. and El-Ashram, A.M.M. (2008):* Digenetic trematodes of the Little Egret, *Egretta garzetta*, and possibility of transmission to *Oreochromis niloticus* at El-Abbassa fish farms, Egypt. 8<sup>th</sup> International Symposium on Tilapia in Aquaculture, Cairo, Egypt (12-14 October 2008) Vol. II: 1351-1364.
- Abd El-Ghany, N.; El-Khatib, N. and El-Ashram, A.M.M. (2009):* Some studies on ulcerative fish syndrome in cultured *Oreochromis niloticus* in. 1<sup>st</sup> Biotechnology conference held at National Research Center, Cairo, Egypt.
- Abd El-Rahim, G.E.A. (1998):* "Studies on the main parasitic diseases affecting cultured fish and its influences by some ecological factors" Ph. D. Thesis, Fac. Vet. Med. Zagazig. University. Egypt.
- Abd El Rahman, A.M.M. (2005):* Studies on prevailing parasitic diseases among some fresh water fishes caused by digenetic trematodes. SCVMJ, 8 (1): 13–24.

- Abu El-Ezz, N.M.T. (1988):* Amorphological study in some intestinal parasites of freshwater fishes in Egypt. M.V.Sc. Thesis, Faculty of Veterinary Medicine, Cairo University.
- Aloo, P.A. (2002):* A comparative study of helminth parasites from the fish *Tilapia zillii* and *Oreochromis leucostictus* in Lake Naivasha and Ololdien Bay, Kenya., *Journal of Helminthology*, 76:95-102.
- Aly, S.; Mayberry, L. and Meleigy, A. (1996):* "Phathological studies on sprolegniosis among *Oreochromis niloticus*." *Zag. Vet. J.*, 24 (3): 51-56.
- Aly, S.E.M. and El-Ashram, A.M.M. (2000):* Some factors contributing to the development of saprolegniosis in Nile tilapia (*O.niloticus*). *Alex. J. Vet. Science*. 16, (1): 165–174.
- Amlacker, E. (1970):* "Text book of fish diseases". T.F.H. Publ.; Neatune city, New Jercy p: 117-135.
- Attia, Y. (2004):* Studies on some diseases affecting the gills of some cultured fishes in Egypt. Ph. D., Fish Diseases and Management Dept., Faculty of Vet. Med., Zag. Univ.
- Awad (2007):* Studies on some prevailing parasitic diseases among cultured carp fishes. M.V.Sc., Fish Disease Dept., Fac. Vet. Med., Suez Canal Univ.
- Ayotunde, E.O; Ochang, S.N. and Okey, I.B. (2007):* "Parasitological examinations and food composition in the gut of feral African carp, *Labeo coubie* in the Cross River, Southeastern, Nigeria". *African Journal of Biotechnology*, 6, 5: 625-630.
- Bowers, D.G; Harker, P.S.D; Smith, P.T. (2000):* "Optical Properties of a Region of freshwater influence". *Estuarine, Coastal&Shelf Science*, Volume 50, Issue 5, Pages 717-726.
- Brewster, B. (1997):* "Keeping Koi health." *Aquar. Pondkeep.*, 61 (12): 21-25
- Cedric, K. and Neil, W. (2007):* (Intervet Norbio Singapore) In the last three issues of the Intervet Aquatic Animal Health Newsletter, we presented a series of articles on tilapia diseases.
- Cusack, R. and Cone, D.K. (1986):* A review of parasites as vectors of viral and bacterial diseases of fish. *J. of Fish Dis.* 9: 169-171.
- Dewra, H. I. M. (1995):* "Some studies on gill affections of some freshwater fishes." M.V. Sc. Thesis, Fac. of Vet. Med., Suez Canal University.

- Eissa, I.A.; Badran, A.F.; Diab, A.S. and Layla, F. (2000): Studies on yellow grub diseases in some freshwater fishes. 1<sup>st</sup> Scientific Conf. Suez Canal. Med.
- El-Gawady, H.M.; Eissa, I.A. and Badran, A.F. (1992): "The prevalent ectoparasitic diseases of *Oreochromis niloticus* Fish in Ismailia city and their control." Zag. Vet. J. (EGVMC)., 20(2), 277-285.
- El-Gohary, M.S.A. (2000): "Studies on monogenetic trematode in freshwater fish with special Reference to their control." M. V. Sc. Thesis, Fac. of Vet. Med., Alexandria Univ.
- El-Nobi, G. (1998): Studies on the main parasitic diseases affecting the skin in some Nile fishes. Ph. D., Fish Diseases and Management Dept., Faculty of Vet. Med., Zag. Univ.
- Gihan, A.A. (1999): Marine fish Parasitology of some fresh water fish at Abbassa in Sharkia Governorate M. V. Sc. thesis (Parasitology) Zagazig University.
- Grabda, J. (1991): "Marine Fish Parasitology". VCH, New York.
- Innes, W.T. (1966): Exotic aquarium fishes. 19<sup>th</sup> Ed aquarium incorporated. New Jersey, pp 12-25, 29-30 and 530-533.
- Kabata, Z. (1985): Parasites and Diseases of fish cultured in tropics. Tylor and Francis, London & Philadelphia.
- Lau, A.; Chen, S.; Sleiman, S. and Sorrell, T. (2009): Current status and future perspectives on molecular and serological methods in diagnostic mycology. Future Microbiol. Nov; 4: 1185-222. Review.PMID: 19895220.
- Lucky, Z. (1977): "Methods for the diagnosis of fish diseases." Amerind Publ. Co. Pv Ltd., New York, 1<sup>st</sup> Ed.
- Mesalhy, S.A. (1994): "Pathological Studies on some fish in Suez Canal area." Ph. D. Thesis, Fac. Vet. Med., Suez Canal University.
- Molnar, K. and Szekely, C. (1997): "An unusual location of *Ergasilus sieboldi* nordmann (Copepoda, Ergasilidae) on the operculum and base of pectoral fin of pick perch (*Stizostedion luitoperca*)". Acta-Veterinaria-Hungarica. 45: 2, 165-175.
- Moravec, F. and Scholz, T. (1994): Observation on the development of *Syncyaria squamata* (Nematoda: Acuariidae), a parasite of cormorants, in the intermediate and paratenic hosts. Folia Parasitol (Praha). 41 (3): 183-92.
- Morozinska-Gogol, J. (2002): "Seasonal variation of parasite infection of three-spinal stickleback (*Gasterosteus aculeate* L.) in the Southern Baltic." Wiad Parazytol., 48(4): 359-373.

- Mostafa, M.; Ibrahim, M. and Easa, M. El-S. (1991): "The effect of seasonal variation on the development of parasitic gill diseases in Cichlid fish." *Banha Vet. Med. J.*, Vol.2 (3).
- Naguib, M. (1994): "Studies on bacterial and mycotic affections of freshwater fishes in aquaculture." Ph. D. Thesis, Faculty of Vet. Med., Cairo, Univ.
- Newaj-fyzul, A.; Mutani, A.; Ramsabhag, A.; Adesiyum, A. (2008): "Prevalence of Bacterial Pathogenes and their Anti-microbial Resistance in Tilapia and other pond water in Trinidad". *Zoonoses and Public Health* 55, 4: 206-213(8).
- Noga, E.J. (1996): "Text Book of Fish Diseases, diagnosis and treatment." Walsworth Publishing Co., U.S.A.
- Omar, M.A.; Oosterhout, C.Van.; Blais, J.; Robinson, R.L. and Cable, J. (2008): "On the Ecology and Host Relationships of *Acanthogyrus (Acanthosentis) tilapiae (Acanthocephala: Quadrigyridae)* from Cichlids in Lake Malawi". *The Helminthological Society of Washington Comparative Parasitology* 75(2): 278-282.
- Osama, H.M.; Solman, W.E.; Noor EL Deen, A.E. and Mohamed, L.A. (2008): Induction of Saprolegniosis *Oreochromis niloticus* with special Reference to its Biological control. *Global Veterinary* 2(1): 32-37.
- Paperna, I. (1996): Parasites, infections and diseases of fishes in Africa - An update *CIFA Technical Paper*. No.31. Rome, FAO. 220p.
- Plumb, J.A. (1999): "Overview of Warmwater Fish Diseases". *Journal of Applied Aquaculture*, 9, 2: 1-10.
- Polacheck, I. (2007): PhD, Department of Clinical Microbiology & Infectious Diseases, Faculty of Medicine, August 2007. Mother & Child Pavilion, Hadassah Ein Kerem.
- Ramadan, H.H. (1991): "Effect of host species, sex, length, diet and different seasons on the parasitic infested of Tilapia fish in Lake Manzalah." *J. King. Abdulaziz Univ. Mar Sci.* 2: 81-91.
- Ruth, F. (1990): "Fisheries and Aquatic Sciences (SFRC) | Fish Health Management" This document is CIR921, one of a series of the Fisheries and Aquatic Sciences Department, Florida Cooperative Extension Service, Institute of Food and Agricultural Sciences, <http://edis.ifas.ufl.edu>.
- Salah, B.S.; Bandyopadhyaya, P.K. and Haldar, D.P. (1995): Seasonal incidence in the distribution of urceolariid ciliated protozoa in



- freshwater fishes of west Bengal. Environ. Eco., 13 (4): 837-852.
- Stueland, S.; Hatati, K. and Skaar, I. (2005):* Morphological and physiological characteristics of *Saprolegnia* spp., strains pathogenic to Atlantic salmon, *Salmosalar* L. Journal of Fish Diseases, 28(8): 445-453.
- Tully, O. and Nolan, D.T. (2002):* A review of population biology and host-parasite interactions of the sea louse *Lepeophtheirus Salmonis* (Copepoda: Caligidae) Parasitology 124: 165-182.
- Udomkusonsri, P. (2003):* Pathogenesis of the acute ulceration response (AUR) in fish. A Dissertation submitted to the graduate faculty of North Carolina State University in partial fulfillment of the requirements for PHD. Comparative Biomedical Sciences.
- Varjabedian, K.G. (1993):* Studies on parasitic nematodes infecting some locality consumed fish in Egypt. Ph. D. Thesis, Faculty of Science, Cairo, University.
- Willough, L.G. (1978):* Saprolegniosis of salmonid fish in Windermere: A critical analysis. J. of Fish Diseases, 1, 51-67.
- WO (2007):* TTO-BASED wide spectrum therapeutics, disinfectants & anesthetics for use in aquaculture. The World Intellectual Property Organization (WIPO) is a specialized agency of the United Nations.
- Woo, P.T. (2006):* Fish diseases and disorders. CABI Publish., London, U.K.
- Woo, P.T.K. and Bruno, D.W. (1999):* Fish diseases and disorders: Vol. 3: Bacterial, Viral and Fungal infections. CABI Co., London, U.K.
- Yimer, E. (2000):* Preliminary survey of parasites and bacterial pathogens of fish at Lake Ziway.: Ethiopian Journal of Science 23, 1: 25-33.
- Younis (1999):* "Effect of some ectoparasitic on the blood and serum constituents of *Oreochromis niloticus* fish with referring to treatment" Beni- Suef. J., 9(3-19).
- Zaki, M.S.; Olfat, M.F. and El-Jackey, J. (2008):* "Pathological and biochemical studies in *Tilapia nilotica* infected with *Saprolegnia parasitica* and treated with potassium permanganate. American-Eurasian J. Agric. & Environ. Sci., 3 (5): 677-680.